



Welcome to Oak Meadow Primary School

From tiny acorns **mighty oaks** grow...





Our Reception Team 😊

Class RB and Class RT



Mrs Bristow: Class
RB

Teachers:



Miss Thwaites: Class
RT

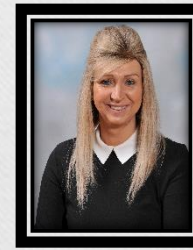
Teaching Assistants:



Mrs Malia



Mr Godwin



Mrs Bradney



Information Pack

- **Introductory Documents:** By now you should have received your introductory pack welcoming you to Oak Meadow which signposts you to our school's website and documents. Included within the envelope are a number of forms which require completion to be returned to school prior to the end of term: Friday 10th July 2020. Thank you.
- **Contact Card:** We also ask for a completion of the Contact Card. This is accessible for all staff and is stored securely within the School Office. We ask for your address details and 3 emergency contact numbers.



Information Pack

- **Uniform Order List incl Book Bags:** Full school uniform must be worn at all times in school ***including formal black shoes***. Oak Meadow has both a summer and winter uniform: the summer uniform is worn for all of the summer term including Autumn Term 1 – until October half-term. Thereupon, the winter uniform is worn. Details can be accessed from both the prospectus and school website. Polo shirts, ties and jumpers with the school's logo can be purchased from the School Office – including book bags. It is imperative school shirts are of the required colour: apple green shirts in the winter and emerald green polo shirts for the summer. In addition to the School Office, uniform can be obtained from: Clemmy's School Wear, Darlaston; Uniform Stall on Willenhall & Walsall Markets; Kids' Corner, Showell Circus and Trutext School Shop, Wolverhampton.



Information Pack

- **Medical Issues:** We kindly ask you to complete the proforma requesting information about any medical issues your child has. This was included within your introductory pack. This ensures we are fully aware and understand your child's needs.
- **School Nurse Information:** Again, there is a letter within your introductory pack for completion which Wolverhampton School Nursing Service require you to complete. Periodically, checks are undertaken for height, weight and hearing.



Information Pack

- **Universal Free School Meals:** All children in Reception, Year 1 and Year 2 are entitled to a free school meal. This year, all Reception children will have a choice of a selection of hot or cold food from the servery within the dining room. Staff are available to assist children in their choices. In addition, at the start of the term, you will be provided with a school menu to support conversations with your child on what they may like to select and eat each day. **Children will not require a lunchbox**, only a named drinks bottle which contains water. Around school, there are also water fountains for your child to access – both indoors and outdoors.



Information Pack

- **Prospectus:** The School Prospectus contains a wealth of information relating to the organisation and curriculum of the school. Much information can be gleaned from reading the document to understand our school and to help prepare your child for their joining of Oak Meadow in Reception.
- **School Nurse Information:** Again, there is a letter within your introductory pack for completion which Wolverhampton School Nursing Service require you to complete. Periodically, checks are undertaken for height, weight and hearing.



Preparation for School

- **Attendance:** Attendance is monitored rigorously and all absences must be reported to the School Office each day: 01902 558517. Attendance is further monitored by the Local Authority's Education Welfare Officer. Holidays must not be taken during term time. Holidays for 5 days or more will incur a fine: £60 per child per parent.





First Day of School

- **First Day of Autumn Term:** Included within the introductory pack is information supporting your child's transition to Oak Meadow. Following the series of visiting sessions and half days, school will begin full-time on Monday 22nd September 2020.
- Staff will welcome you at the main Reception classroom door.
- We ask that children arrive at school between 8.45 a.m. and 8.55a.m. At 8.55a.m. a statutory register will be taken. It is imperative that children are in attendance at this time to avoid being marked late or absent. Attendance and punctuality are monitored by both Ms E Simcox and Miss Parker, in the School Office, and by our Education Welfare Officer.



First Day of School

- During your child's settling into full time education, you may accompany your child into school to support their settling but as the days go by, we encourage you to leave your child as they immerse themselves in their play and learning in the morning activities which have been setup.
- As your child's confidence develops, we encourage you to allow your child to enter the cloakroom on their own - to be helped by a member of staff before entering the classroom independently.



General Information

- **EvidenceMe:** This is a software tool which teachers use to capture your child's learning experiences and development within the Early Years Foundation Stage. Using teachers' observations, the evidence supports the planning of further learning journeys for your child.
- **Come and Play:** During the year, teachers plan opportunities for you to 'come and play' with your child within the indoor and outdoor environments providing you with first-hand experience of the resources and equipment your child uses in their learning.





General Information

- **Workshops:** During the year, there are also opportunities to take part in curriculum workshops. These will focus upon early reading and helping your child at home – with their phonics and number workshops. Further information will be sent regarding these in the Autumn Term when we know the Government guidelines for holding such group meetings.
- **Home School Liaison Officer:** Miss Parker is our Home School Liaison Officer and she is able to help with any concerns you may have about you child's behaviour or issues relating to their emotional development or welfare.





General Information

- **School Fund:** We ask for a voluntary donation of £6 per year, £2 a term, to help with the purchasing of resources and equipment for purchasing special items for special occasions.
- **Reporting your Child's Progress:** In addition to the open door policy we operate – meeting and having the opportunity to chat to staff both at the beginning and end of the day – termly consultations are held by appointment. In addition, a termly report is available further informing you of your child's progress and targets for development.





Early Years Foundation Stage

Areas of Learning:

Your child will mostly be taught through teacher- and child-initiated learning. The areas of learning are:

- Communication and Language;
- Physical Development;
- Personal, Social and Emotional Development;
- Literacy;
- Mathematics;
- Understanding the World, Expressive Arts and Design.







A Day in Reception



Your child will:

- Have a daily Phonics session;
- Have a short Maths session where the environment will be set up to support their continuing learning – using a wide range of mathematical counting/ number equipment;
- Have opportunities to lead their own learning;
- Participate in exciting educational visits each term.
- Attend Forest School weekly led by Mr Godwin



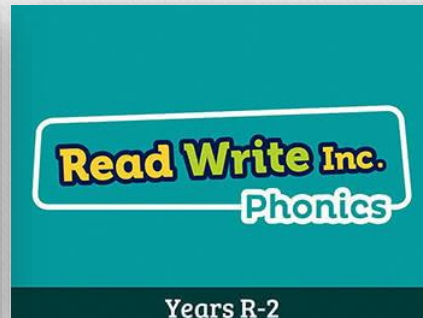
- Have access to our reading scheme;
- Share work with parents/ carers during 'Come and Play' sessions
- Have weekly engaging homework tasks;
- Your child will have opportunities to 'show and tell' of an event that is important to them;
- Take Bob or Eddie home for a visit to encourage a recording of their activities;
- Participate in exciting educational visits each term.





Phonics

We follow the Ruth Miskin Inc (RWI) phonic scheme which teaches children to recognise and blend sounds so that they are able to read with confidence and fluency. As soon as children enter Reception, they are exposed to phonics through the environment and tailored activities. When the children are settled, more structured phonic sessions will take place. Reading and practising these at home will be extremely beneficial and will give them the best possible start.



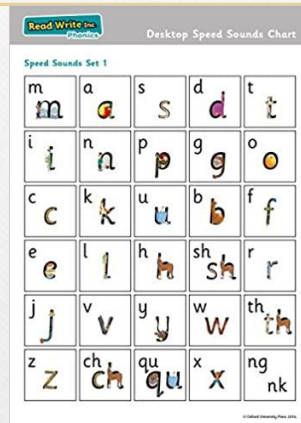


Phonics

Decoding

Your child will:

- Learn 44 sounds and corresponding letters.
- Learn how to read words by blending.
- Read specially written books featuring all the words they have learned to sound out and blend.



Comprehending

Your child will:

- Talk a lot about what they have read to show their own understanding.
- Listen to and discuss other ideas to deepen understanding.

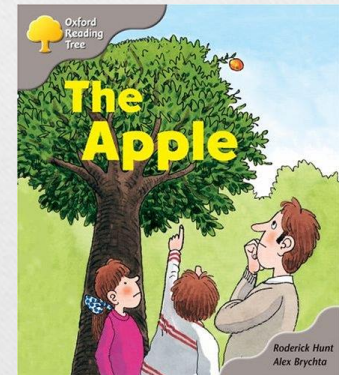


Reading Scheme

Your child will receive their own reading diary which will provide questions and activities to develop their comprehension, spoken language and vocabulary. These skills can be transferred to books that you read together at home.



Phonically decodable word books.

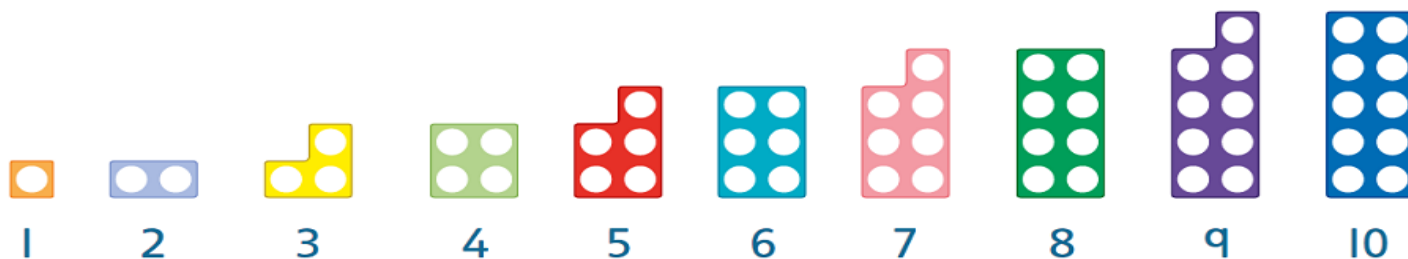


Picture books to encourage imagination and discussion.



We use Numicon shapes as a way of scaffolding your child's understanding of number. These can be used to recognise, order, see relationships and begin to problem solve using numbers.

There are a wide range of free printable resources available on the internet for you to support your child at home.





Forest School

- We capitalise on the outdoors as a real context for learning.
- We utilise our forest and outdoor environment as a rich source of natural materials for learning.
- We build upon the way in which children learn by:
 - Being active;
 - Having first-hand experiences;
 - Using all of their senses;
 - Investigative learning;
 - Exploratory learning;
 - Building upon their natural curiosity.







Preparing your child for Reception

To ease the transition into full-time schooling and to give your child the best possible start, we would encourage your child to be able to:

- Be fully independent in their use of the toilet;
- Recognise their name in print;
- Be attempting to write their name;
- Count to ten in the correct order;
- Know the name of colours;
- Practise dressing themselves in preparation for PE.



Preparing your child for Reception

To support your child's preparations and anticipation for full time school, please:

- Play games encouraging turn taking;
- Share stories and discuss their favourite part or character;
- Take part in listening games, such as eye spy;
- Introduce fine motor activities that involve playdough, pegs, threading, painting, tweezers, cutting and pincer movements, e.t.c.



Websites to support your child

- Phonics Play
- Alphablocks
- Numberblocks
- TopMarks

For further guidance to websites, please follow the link below:

<https://www.gov.uk/government/publications/coronavirus-covid-19-online-education-resources/english-resources#english-early-years>



Final Note...

Although we are in unprecedented times, this is an important yet exciting milestone for your child. Our priority is to ensure that your child has a smooth, happy and safe transition to school.

We are looking forward to welcoming you to the Oak Meadow Family 😊.

If you have any further questions, please email - oakmeadowprimaryschool@wolverhampton.gov.uk or contact school on 01902 558517.

From tiny acorns **mighty oaks** grow...







Our school website:
www.oakmeadowsschool.co.uk

From tiny acorns **mighty oaks** grow...

