

Year Four Visit To Kingswood

22nd March to 24th March inclusive

<https://www.kingswood.co.uk/schools>



What we do: Itinerary

Oak Meadow Primary School - KW6850 22.03.2023 - 24.03.2023											
Wednesday											
4						Arrival 14:30	Dorming 15:15	Bushcraft - Shelter Building 16:00	Dinner	Group Contract	Scorpheap Challenge
5						Arrival 14:30	Dorming 15:15	Bushcraft - Shelter Building 16:00	Dinner	Group Contract	Scorpheap Challenge
6						Arrival 14:30	Dorming 15:15	Jacobs Ladder 16:00	Dinner	Group Contract	Scorpheap Challenge
7						Arrival 14:30	Dorming 15:15	Obstacle Challenge 16:00	Dinner	Group Contract	Scorpheap Challenge
Thursday											
4	Breakfast	Jacobs Ladder 09:15	Nightline 10:45	Lunch	Get Connected	Bushcraft - Fire Lighting 14:30	Obstacle Challenge 16:00	Dinner	Trip Reflection	Campfire	
5	Breakfast	Nightline 09:15	Jacobs Ladder 10:45	Lunch	Get Connected	Bushcraft - Fire Lighting 14:30	Obstacle Challenge 16:00	Dinner	Trip Reflection	Campfire	
6	Breakfast	Nightline 09:15	Obstacle Challenge 10:45	Lunch	Get Connected	Bushcraft - Shelter Building 14:30	Bushcraft - Fire Lighting 16:00	Dinner	Trip Reflection	Campfire	
7	Breakfast	Bushcraft - Fire Lighting 09:15	Nightline 10:45	Lunch	Get Connected	Bushcraft - Shelter Building 14:30	Jacobs Ladder 16:00	Dinner	Trip Reflection	Campfire	
Friday											
4	Breakfast	QuickZip 2 09:15	Archery 10:45	Lunch	Departure						
5	Breakfast	QuickZip 2 09:15	Archery 10:45	Lunch	Departure						
6	Breakfast	Archery 09:15	QuickZip 2 10:45	Lunch	Departure						
7	Breakfast	Archery 09:15	QuickZip 2 10:45	Lunch	Departure						



What we do: Climbing

This is Jacob's Ladder.

Children wear helmets and harnesses and climb up as far as they can.

What we do: Night Line

This is Night Line.

Children are blindfolded and led/guided through the network of obstacles – safely.





What we do: Zip Line.

This is Zip Line.

Children are helmeted, harnessed and sent along the zip line – the far end of the picture.

What we do: Obstacle Course.

This is Obstacle Course.

Children are guided around each section of the obstacle course with fun games on their way round.



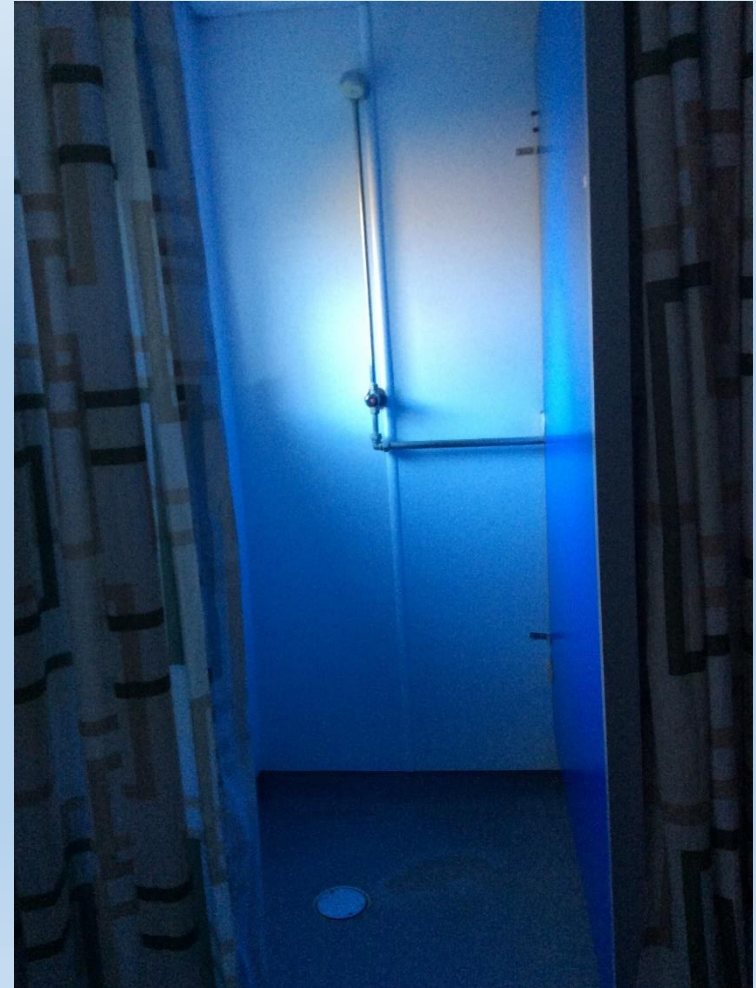
Accommodation.

Our accommodation is in dormitories. Each dormitory will hold up to 14 students in the larger rooms and 8 in the smaller rooms.

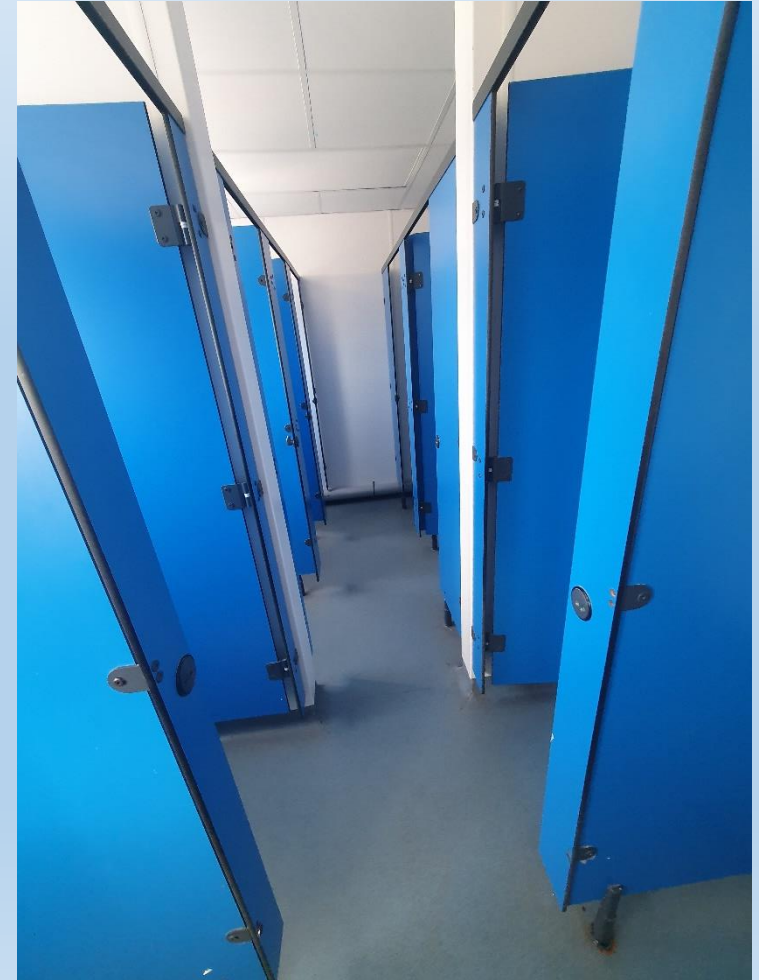


Accommodation.

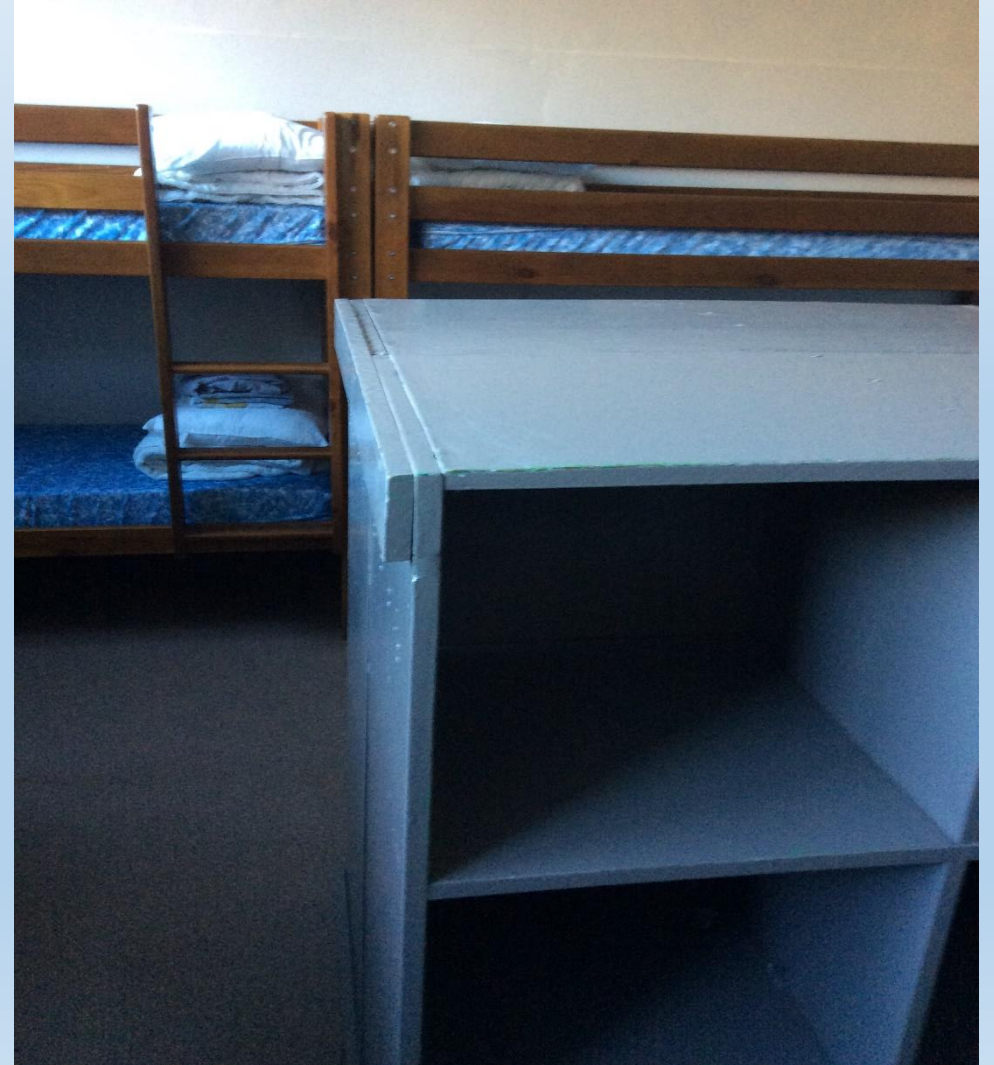
There are toilet blocks and showers.



Accommodation.



Accommodation.

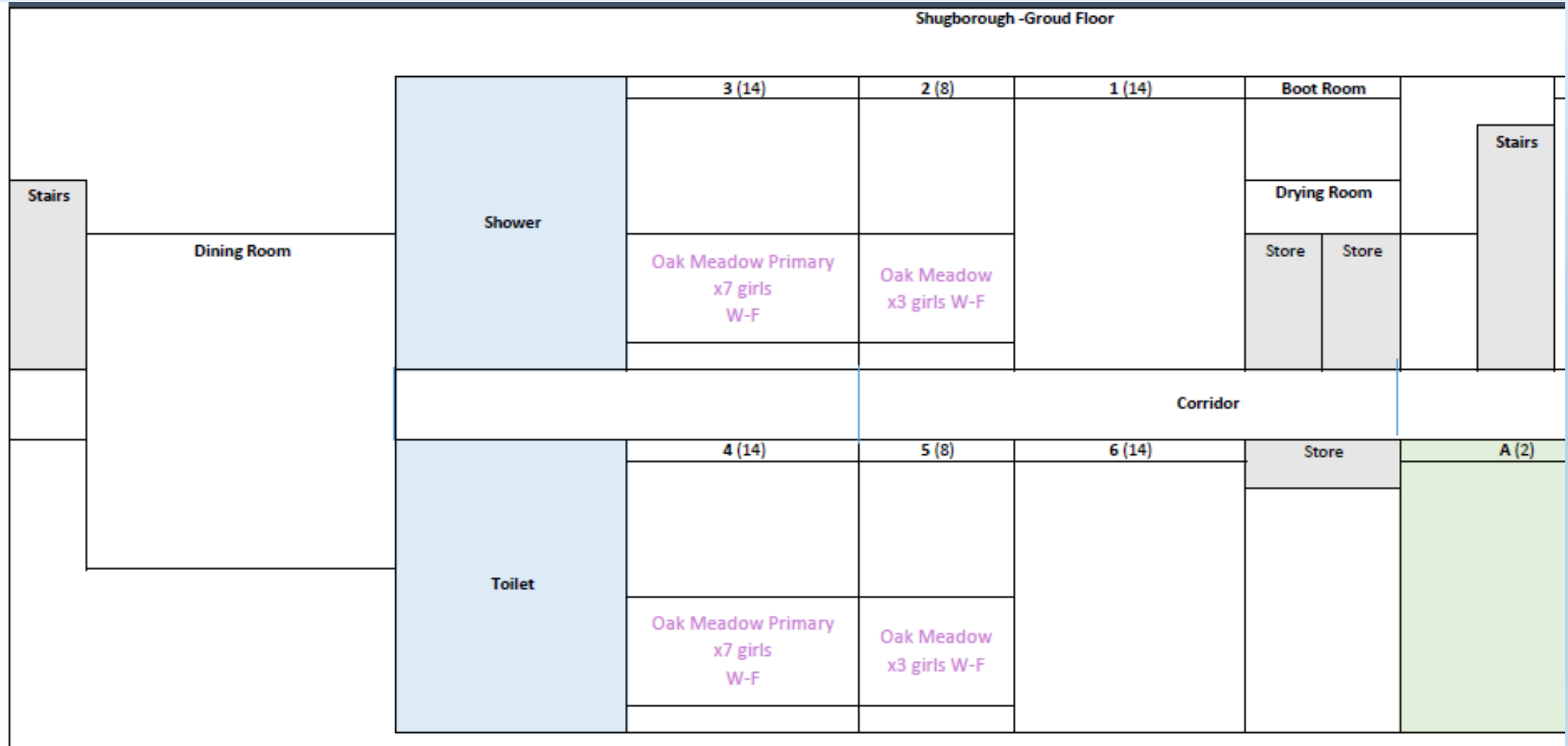


Accommodation

W/C							
Bantock - First Floor							
Stairs	F (1)	4 (6)	Shower	3 (14)	2 (8)	1 (14)	Store Boiler
	Oak Meadow Primary x1, W-F	Oak Meadow Primary x5 boys, W-F		Oak Meadow Primary x10 boys W-F	Oak Meadow Primary x5 boys, W-F		
	Corridor						
	Drying Room	5 (6)	Toilet	6 (14)	7 (8)	8 (14)	Store
				Oak Meadow Primary x10 boys W-F	Oak Meadow Primary x5 boys, W-F		

Accommodation

Shugborough -Groud Floor



Accommodation.

We will be asking the children to write down a first choice and second choice friend to share a room with them. In most cases, we will be able to place your child with a friend. The activity groups will be mixed boys and girls and will be decided by Oak Meadow staff.

Food.



We have a set breakfast menu each day with a huge range of delights such as continental, cereals, beans, toast, bacon and sausages. As always, we will ensure children with allergies and ‘fussy eaters’ will be catered for.

The day we depart.

On Wednesday, 22nd March, please bring cases/bags to the school hall (wait by the outer entrance of the hall) at the normal 'start of school' time. Your child does not need to be in uniform. Please bring any medication in a separate bag with your child's name, the dose of medication required and the time when it should be taken. This should be handed to Mrs Mincher as you come into the hall. If there have been any changes to your medical form details (eg contact numbers, medication changes, etc) please let us know immediately.

The day we depart.

Please remember that we will require the children to bring a packed lunch on Wednesday, 22nd March.

Please help your child to bring their bags into the school hall. It is important to make sure that the entrances are kept clear to allow safe passage of all parents, carers, staff and children. *We will be leaving at approximately 11:20 and we are likely to take our bags to the Peacock Avenue entrance where we will meet the coach for loading up and departing.*

The day we return.

We will leave Kingswood at 1:20 on Friday, 24th March. The coach should arrive back at Oak Meadow by 2:10 to 2:20. The coach will drop off at Peacock Avenue. If you wish to take your child to go straight home from the drop off points, please ensure you have informed a member of staff before leaving.

Final “stuff”.

- Souvenir shop (£5)
- Food – set menu. **Packed lunch to take.**
- ‘Medical needs’ (forms must be filled in with current emergency contact numbers)
- Clothing (outdoor clothing/coats etc and details of other items can be found on the suggested kit list)
- Indoor/outdoor footwear
- **No phones or electronic games**
- We will send you a final reminder of departure day details in the week beginning 20th March.

Any questions?

